

SPECIAL Violet S4B-F01

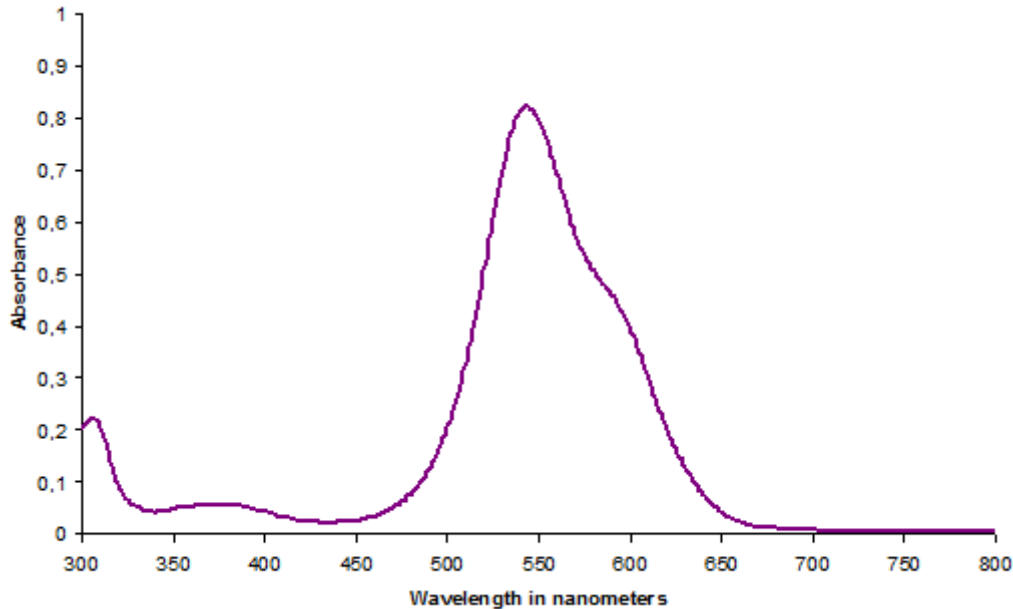
General properties	Red shade dye for ink, detergent and other applications Erasable with a normal eraser pen	
Color Index Part I	Acid Violet 17	
Color Index Part II	42650	
Chemical class	Sulfonated Triphenylmethane	
Appearance	Violet powder	
Color strength tolerance	± 5%	
Surface tension (DIN 53914, 3% solution)	> 40 mN/m	
pH (10% in water)	6 – 8	
Lightfastness	2	
Salt content	< 20%	
Solubility (g/L at 25 °C)	Water_____60	Propylene glycol
	_____10	
	Diethylene glycol__50	
Applications	Office supplies (Water-based inks) Cleaning agents (fabric softeners, soaps, household products) Wood stains and preserving agents Matches Fertilizers	
Stability	Storage stability: 60 months from delivery ex plant.	



Absorbance curve



Special Violet S4B-F01 in water



This information and our technical advice - whether verbal, in writing or by way of trials - are given in good faith but without warranty, and this also applies where proprietary rights of third parties are involved. Our advice does not release you from the obligation to verify the information currently provided - especially that contained in our safety data and technical information sheets - and to test our products as to their suitability for the intended processes and uses. The application, use and processing of our products and the products manufactured by you on the basis of our technical advice are beyond our control and, therefore, entirely your own responsibility. Our products are sold in accordance with the current version of our General Conditions of Sale and Delivery.



LANXESS Deutschland GmbH
Business Unit Rhein Chemie Additives
Kennedyplatz 1
50569 Cologne, Germany
<http://rch.lanxess.com>

