

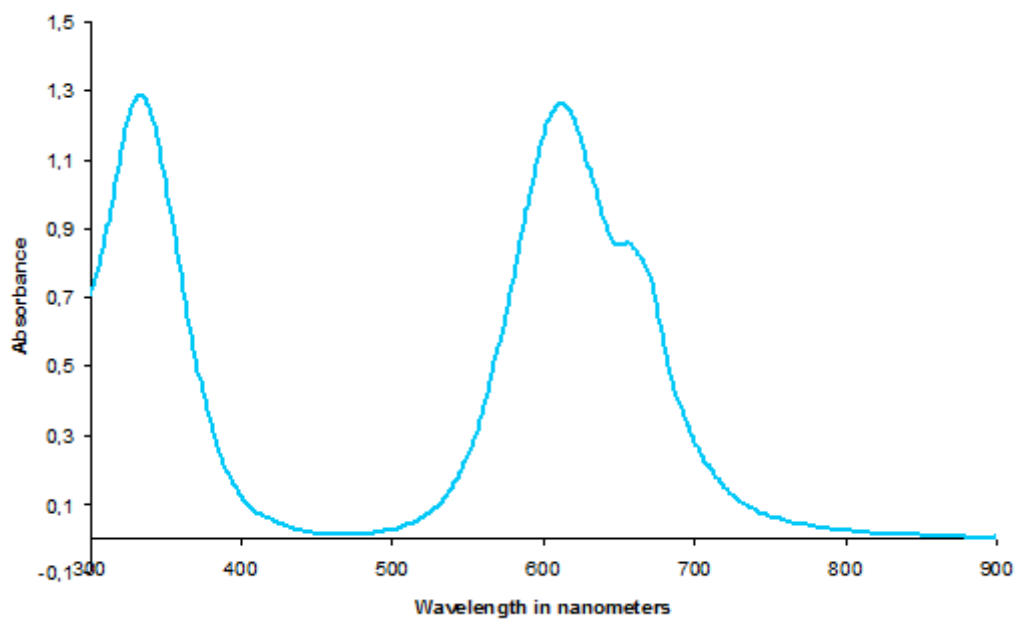
BAYSCRIPT® Cyan BA liq.

General properties	Highly purified, very low salt cyan dye Excellent filterability (0.45 µm) Very good lightfastness Excellent ozone fastness compared to other D. Bl. 199 dyes	
Color Index Part I	D. Bl. 199	
Color Index Part II	74190	
Chemical class	Phthalocyanine-Cu	
Appearance	Blue liquid	
Dye content	≈ 12%	
Color strength tolerance	± 5%	
Solvent	Water	
Surface tension	> 50 mN/m	
pH (form supplied)	7.5 – 9.5	
Viscosity	< 10 mPas	
Filterability (0.45 µm filter)	≤ 0.01% residue	
Lightfastness	6	
Solubility (g/L at 25 °C)	Water	miscible
	Glycols	miscible
	Ethanol 96%	partially soluble
Ion content (ppm)	Chloride < 100	Sulfate < 200
	Calcium < 20	Magnesium < 20
	Silicon < 20	Iron < 20
Applications	Water-based inks Thermal and piezo ink-jet printing, industrial ink-jet Office supplies Fine liner inks Writing instruments (felt-tip markers, fiber-tip pens, extruded plastic pens)	
Stability	Storage stability: 24 months from delivery ex plant. Protect from freezing. BAYSCRIPT® Cyan BA liq. (0.01% aqueous solution) is stable against weak acids and strong bases.	



Absorbance curve

Cyan BA liq. in water



This information and our technical advice - whether verbal, in writing or by way of trials - are given in good faith but without warranty, and this also applies where proprietary rights of third parties are involved. Our advice does not release you from the obligation to verify the information currently provided - especially that contained in our safety data and technical information sheets - and to test our products as to their suitability for the intended processes and uses. The application, use and processing of our products and the products manufactured by you on the basis of our technical advice are beyond our control and, therefore, entirely your own responsibility. Our products are sold in accordance with the current version of our General Conditions of Sale and Delivery.



LANXESS Deutschland GmbH
Business Unit Rhein Chemie Additives
Kennedyplatz 1
50569 Cologne, Germany
<http://rch.lanxess.com>

